



MADE IN THE USA

SPARK x ATK TECH TOES

Instructions and Setup Guide

Compatibility:

Works with all splitboards using the industry standard touring bracket insert pattern.



Included Parts



2x Spark x ATK
Tech Toes



4x M6x10mm
Screws



2x Stainless Steel
Center Screws

Required Tools



#3 Phillips
Screwdriver
(found in your
spark tool)

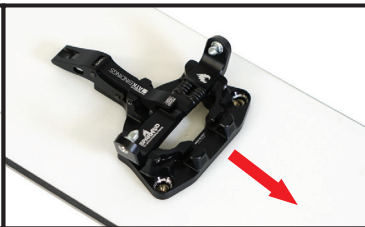
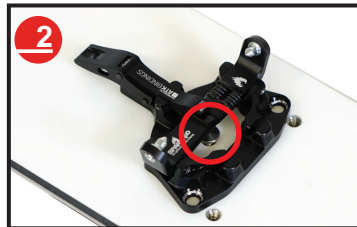
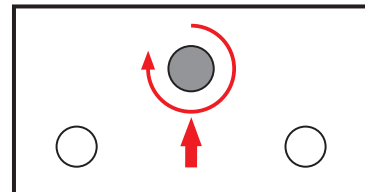
or



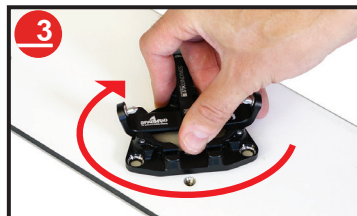
#3 Phillips
Screwdriver



Start by tightening the center screw into the forward most touring insert by hand.

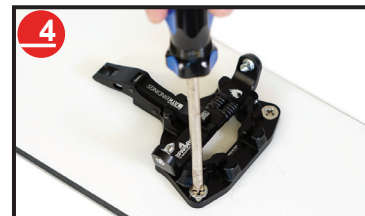


Set the center cutout of a tech toe over the center screw. Slide the notch in the cutout rearward under the head of the screw (you may need to rotate the tech toe to align the notch with the flats on the screw). If the screw is too tight to slide under, remove the tech toe and loosen by one rotation.



Using the tech toe as a wrench, tighten the center screw, ending the rotation so that the rear tech toe mounting holes line up with the board inserts and the center screw is tight.

Note: If the mounting holes don't line up when the toe piece is tight, you may need to unscrew the toe piece half a turn and reposition on a different set of center screw flats and repeat step 3.



Finish by installing two M6x10mm screws through the rear tech toe mounting holes.

To Tour:

1 Click in



2 Lock



To Release:

Fully depress lock lever.

