

# MOLDED FIXIE CLIPS THROUGH-MOUNT

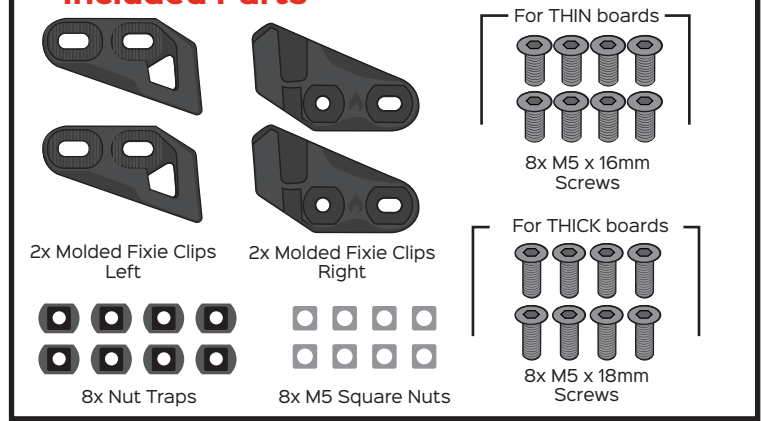
Spark R&D will not be held liable for product damage due to user error.  
Read all instructions before beginning!

## Compatibility:

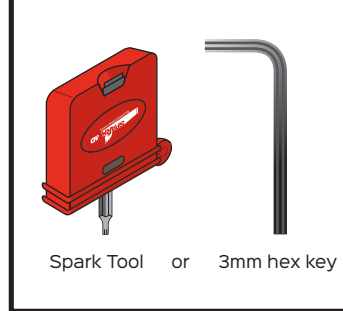
**Compatible** with all two piece splitboards that are drilled through at the clip mounting points (you will see screw heads on the base of your board).

**Not compatible** with 3-piece or 4-piece splitboards.

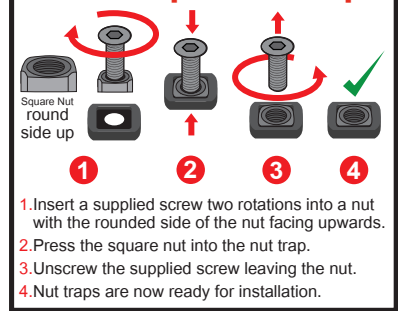
## Included Parts



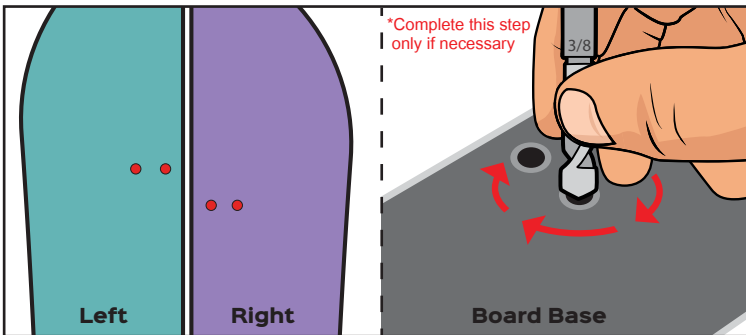
## Installation Tools



## Nut Trap Install Tip



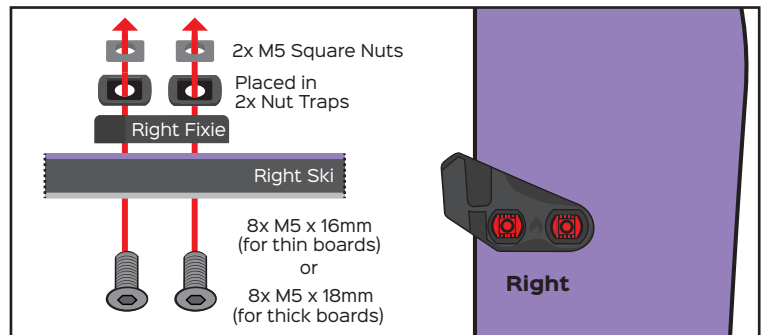
## Fixie Clip Installation



### INSTALLATION STEP 1

Remove all of your old clip hardware. Screws from your old clips CANNOT be used for Molded Fixie Clip installation.

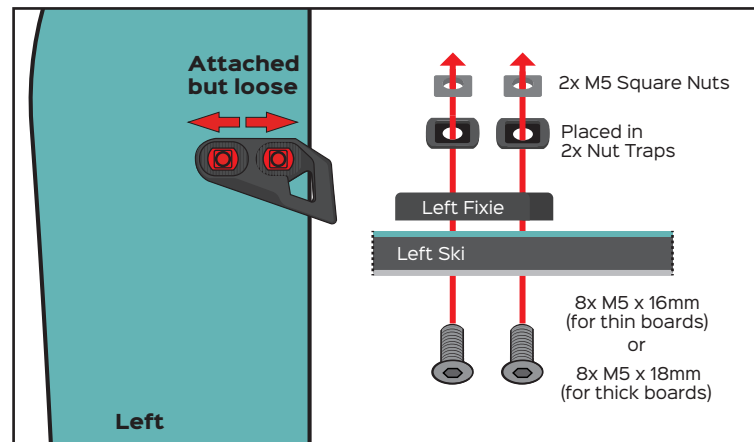
**Note:** If your board was originally equipped with Voile Split Hooks the mounting holes may not be deep enough for the included screws - which may stick out proud of the base in the next steps. If this is the case use a 3/8" or 10mm drill bit to countersink the 8 clip holes in your base. Turn the bit by hand (do not use a drill) and check the fit with screws often, you will not need to remove much material.



### STEP 2

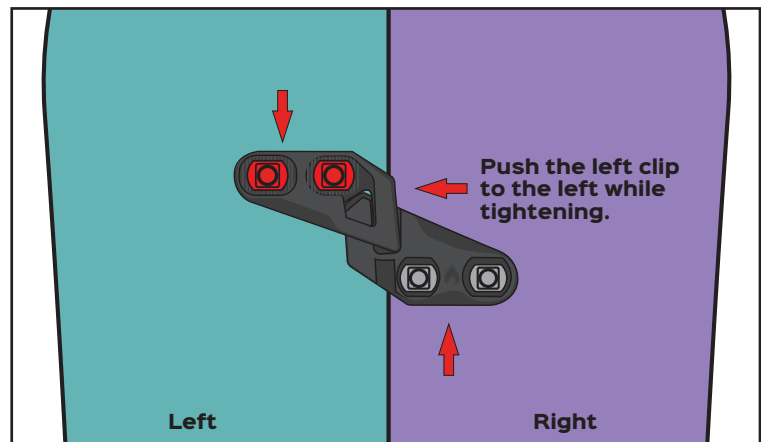
With your board halves apart, securely tighten both right Fixie Clips on your right ski using 2x M5x16mm or 2x M5x18mm screws (depending on your board thickness) with 2x square nuts placed in to the nut traps on the right ski for each clip.

**Note:** If you have a thinner board (likely carbon), the M5x18mm screws will stick up further than desired. In this case, use the included shorter M5x16mm screws for the complete installation instead.



### STEP 3

Attach both left Fixie Clips on your left ski using 2x M5x16mm or 2x M5x18mm screws (depending on your board thickness) with 2x M5 square nuts placed in to the nut traps on each. Do not tighten these screws, keep them loose allowing the clip to move side to side until step 4.



### STEP 4

Connect your two splitboard halves while the left clips remain loose. Once together push the middle seam together by either attaching your bindings into ride mode or pushing the board halves together manually. Push the left clip to the left while tightening the left clip screws.

# Molded Fixie Clips Continued

## STEP 5 - Complete your splitboard

Test your splitboard clip connection by sliding your splitboard apart and re-attaching it. If your splitboard edges don't touch underneath the clip, take apart the two board halves, loosen the left clip screws, nudge the left clip to the left, and re-tighten the screws. Too tight? Take apart the board halves, loosen the left clip screws, nudge the left clip to the right, and re-tighten the screws.

