

SPARK CROSSBAR CLIPS

Setup & User Guide

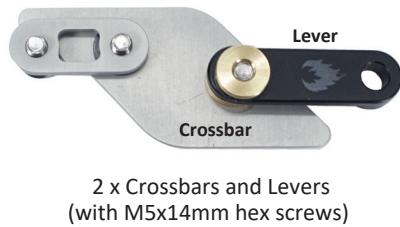
This guide will walk you through the steps of mounting your Crossbar Clips to your splitboard. Follow these instructions and you will be set up and ready to go in just a few minutes.

Spark R&D will not be held liable for product damage due to user error. Read all instructions before beginning!

Compatibility:

Spark Crossbar Clips work with all two piece splitboards with standard clip mounting holes. Boards with inserts rather than holes for clip mounting are not compatible i.e. Jones Boltless Bridge splits (17/18+ Storm Chaser, Solutions, and Ultracraft) and Nitro Doppelganger, Nomad, and Volta splits.

Included Parts:



Required Tools:



Setup Instructions:



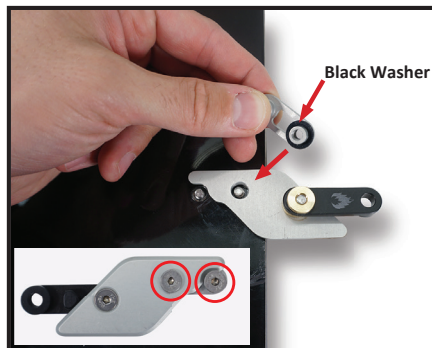
1. Remove all of your old clip hardware. Screws from your old clips CANNOT be used for Spark Crossbar Clip installation.



2. Remove the screws from the 'L' alignment brackets.



3. Install both 'L' brackets onto the right side of your splitboard with the L hooks pointing towards the nose of your board. Tighten the screws to a secure position. If your board was originally equipped with Voile Split Hooks the mounting holes may not be deep enough for your 'L' bracket screws - which may stick out proud of the base. If this is the case use a 3/8" or 10mm drill bit to countersink the holes in your base. Turn the bit by hand and check the fit with screws often, you will not need to remove much material. Once all of the screws are securely fit, loosen by 1/2 turn for tension adjustment in step 5.



4. Remove the two board attachment screws from each crossbar, and install both crossbars onto the left side of your board insuring the black plastic washer sits on top of the crossbar. These screws should be tight enough that the crossbar can be turned and stowed away in tour mode with enough friction to stay in place. They should also be loose enough that the crossbar can be moved from ride to tour mode. (The tightness of the crossbar is rider preference.) If you have a thinner board and the screws stick out, use the included M5x12mm screws instead.

Continue on page 2

SPARK CROSSBAR CLIPS

Setup & User Guide

Setup Instructions Continued:

5. Once all pieces are mounted to your splitboard rotate the crossbars and levers counter clockwise to their stop positions.

Locking into **ride** mode

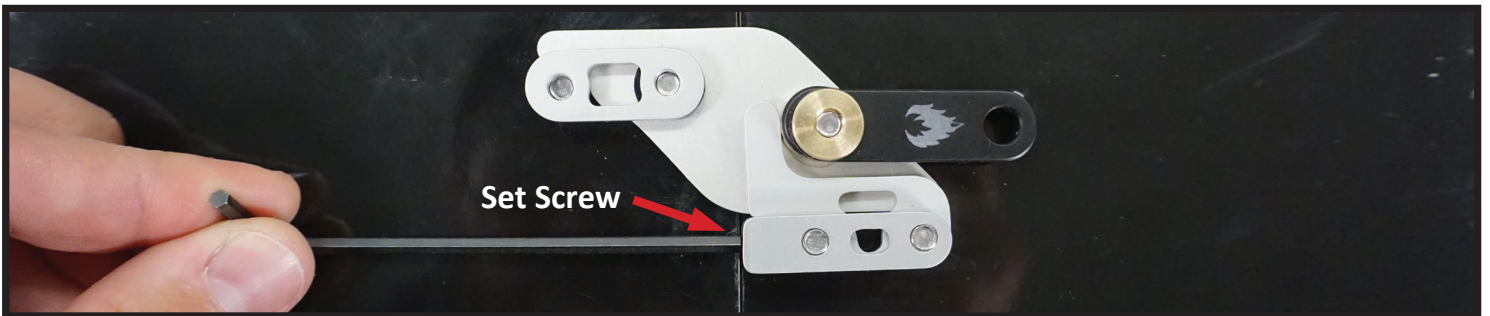
Slide board halves together into ride mode.



Rotate the lever into the lock position.



Lever too tight or too loose? Adjust the set screw in the 'L' alignment brackets 1/4 turn at a time to fine tune clamping tension. Once satisfied tighten the 'L' alignment bracket mounting screws.

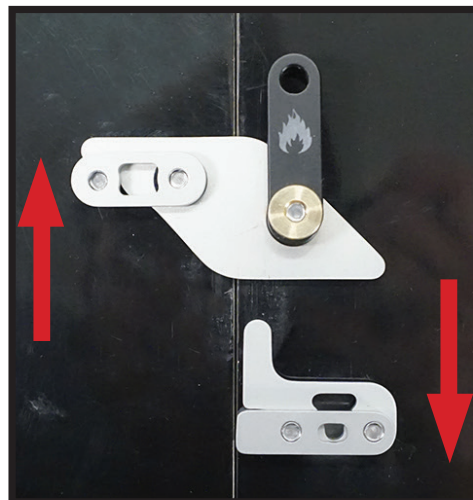


Unlocking and stowing into **tour** mode

Unlock by rotating the lever toward the nose.



Slide the board halves apart.



Rotate the lever into the stowed position.



6. Double check that all 'L' alignment bracket and crossbar mounting screws are tight. Go splitboard.