

SPARK PUCKS

Setup & User Guide

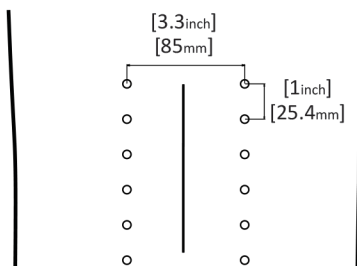


Spark R&D will not be held liable for product damage due to user error. Read all instructions before beginning!

Compatibility:

Compatible with all factory built splitboards with the Voile hole pattern: Puck inserts spaced 3.3" (85mm) across the width of the board and 1" (25.4mm) along the length of the board.

Not compatible with DIY splitboards (unless the Voile factory hole pattern was used) or channel style boards from Voile, Burton and K2.



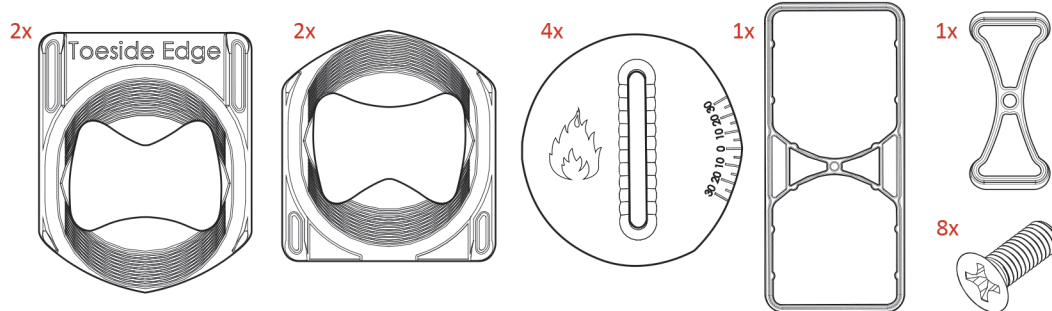
Voilé Hole Pattern

Included parts:

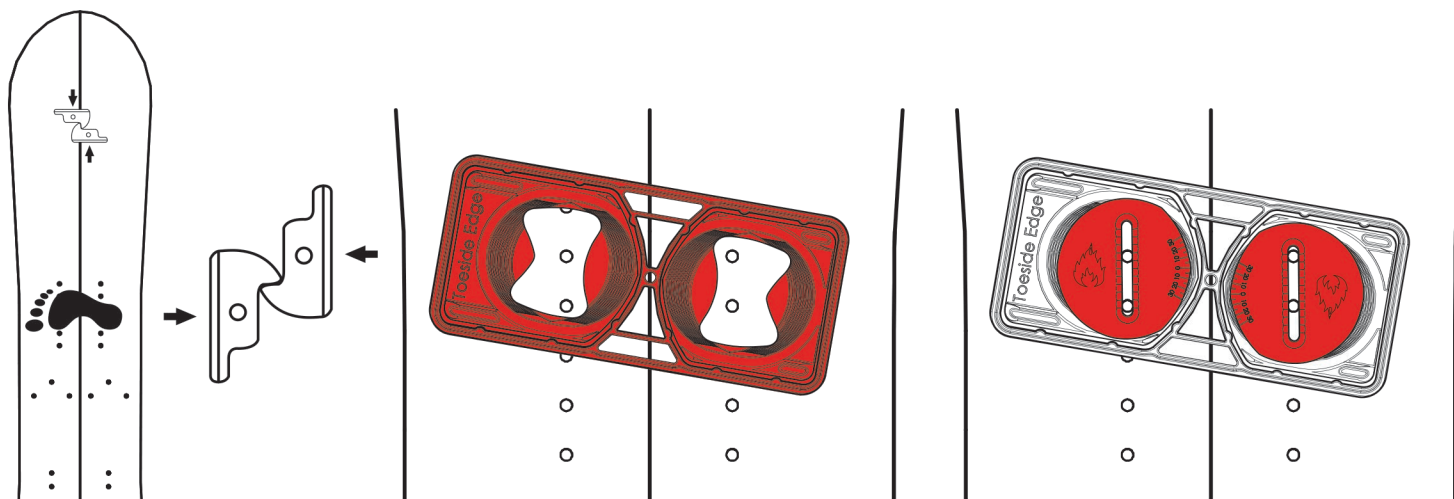
- 2 x Toeside puck
- 2 x heelside puck
- 4 x Aluminum center disks
- 1 x Full Alignment Tool
- 1 x Mini Alignment Tool
- 8 x M6 x 16mm Flathead screws

Required tools:

- (Found in your Spark Tool)
- #3 Phillips head screwdriver



Setup Instructions: All Bindings



1. Assemble your split in board mode. If equipped with Voilé hooks clamp them together.

2. Stand on your board and decide where you want your feet. Mark a dot where the center of each foot will be on the board seam.

3. Place the full alignment tool on the board. Insert a toeside puck (marked with "toeside edge") and a heelside puck into the alignment tool.

4. Locate the tool over the center mark of one of your feet.

5. Drop an aluminum center disk into each of the pucks. Degree indicator marks should point toward the center line of the board. Rotate so you can see the board inserts through the slot in the disk.

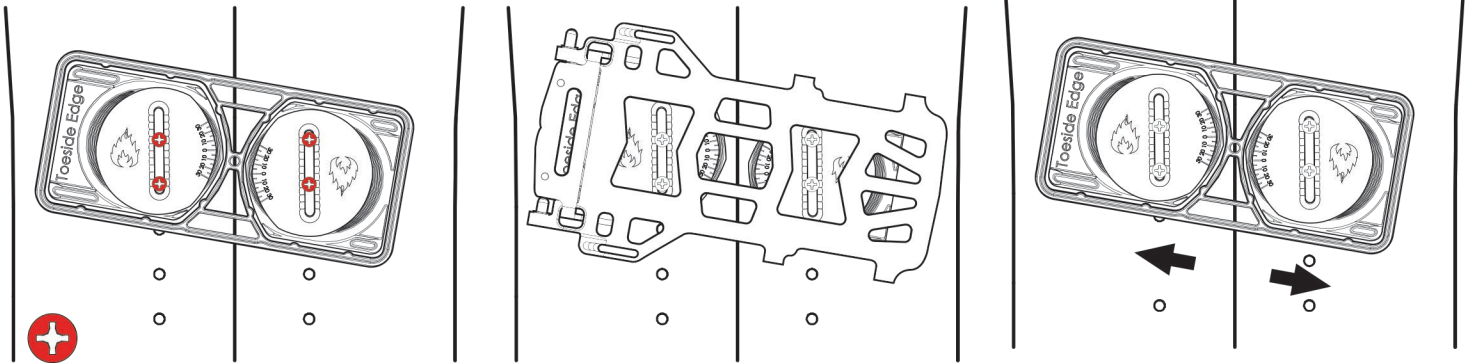
SPARK PUCKS

Setup & User Guide



Setup Instructions:

continued from front side



6. Insert two M6 screws through each disk into the inserts in the board. Tighten a few turns with a screw driver and then rotate pucks to desired angle.

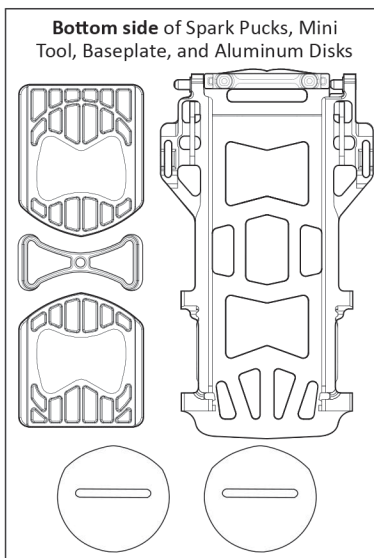
7. Once pucks are in the desired location tighten the screws.

8. Remove the alignment tool and slide your bindings onto the pucks and secure with snap ramp or pin. If you're unable to secure your bindings loosen the screws, nudge in the toeside puck and retighten the screws.

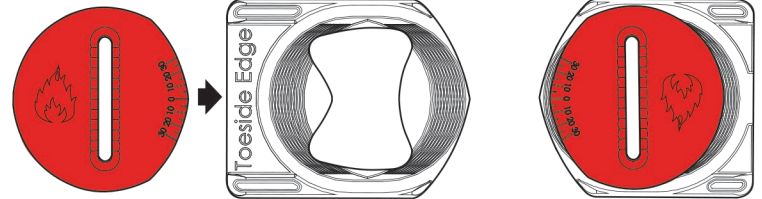
9. Strap your boots into your bindings and check the heel toe centering. To adjust centering replace the alignment tool, loosen the screws, and slide pucks toward toe or heel edge. Tighten screws and check centering again.

10. Repeat for other foot.

Alternate Method: Mini tool with Arc, Magneto and Burton Hitchhiker bindings.



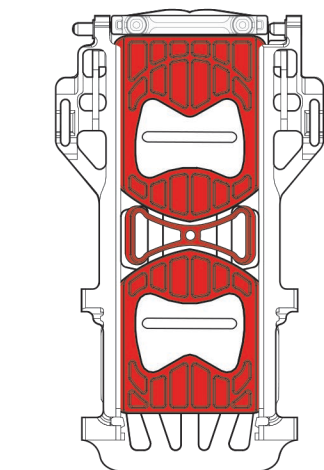
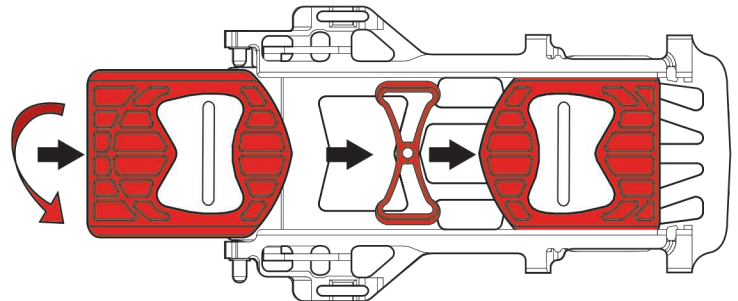
1. Insert an aluminum center disk into each puck with the degree indicators pointing toward the pointed end of the puck.



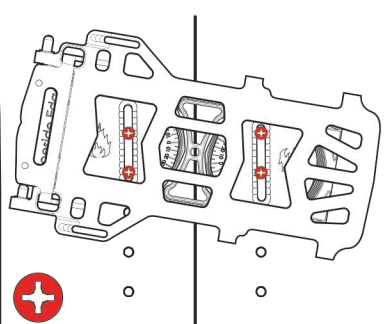
2. Turn your binding upside down and slide the heelside puck into the channel. (Heelside puck does not say toeside edge on it).

3. Set the mini tool into the binding channel.

4. Slide the toeside puck into the channel.



5. Snap down the ramp or slide the pin into your bindings to secure the pucks.

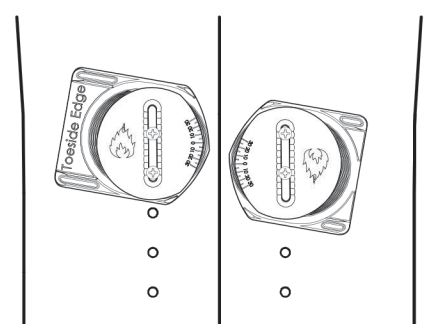


6. Flip the binding over and set on your board where you wish to attach it.

7. Rotate center disks until you can see the board inserts. Insert two screws through each disk and tighten a few turns.

8. Move binding around until it's in just the right place, check with boots strapped in to bindings.

9. Tighten all the puck screws.



10. Slide your binding off the pucks and remove the mini tool.

11. Repeat for other foot.