



The splitboard binding company.



MADE IN THE **USA**

2015/2016

SPARK R&D CATALOG



MADE IN THE USA



CHRONICLES OF SPARK

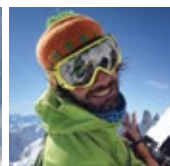
Based out of Bozeman, Montana, USA, Spark R&D is rider owned and operated – dedicated to pushing innovation in splitboarding since 2006. We are proud to say that it's been another amazing season for us. We put out more product than ever before, earlier than ever before. We doubled the size of our factory and tripled our machine capacity and have been nerding out on late night prototyping sessions to keep raising the bar of what is possible in splitboard gear. And we know you all love to nerd out with us – your enthusiasm fuels our creativity – so let's get right to the point: For next season, we are thrilled to introduce our new Tesla T1 System. With it comes an absolutely epic lineup of splitboard gear, including our first women's bindings, a brand new highback design, Spark pucks, and more. It's shaping up to be another fun-filled year at Spark — thanks for riding with us!



SPARK R&D TEAM RIDERS



Ryland Bell



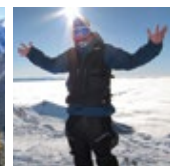
Luca Pandolfi



Marcin Jaskolka



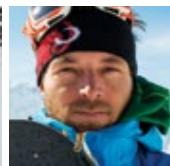
Chris Coulter



Skylar Holgate



Justin Lamoureux



Aurelien Routens



Byron Bagwell



Elliott Bernhagen



Claudia Avon

SELECT AWARDS

Backcountry Magazine Gear Guide Select (2015)

Backcountry Magazine Editor's Choice (2010, 2012, 2013, 2014)

Snowboard Magazine Platinum Pick (2011, 2012)

Prospera Business Network Entrepreneur of the Year (2011)

Transworld Snowboarding Editor's Pick (2010)

SIA Snow Show Daily Snowpress Innovation Award (2010)

ISPO Brand New Award for International Innovation (2010)



In 2013/14, we released our revolutionary Tesla System bindings, a quantum leap forward in splitboard binding touring and riding performance. With two seasons of fine tuning, brilliant epiphanies, and pure hard R&D, we have evolved the system to be lighter, more versatile, and even easier to use. For 2015/16 we bring you two new splitboard bindings – the Arc and the Surge – featuring our new Tesla T1 System.



TESLA T1 BINDING ANATOMY

One Climbing Wire: T1 stands for OneWire. Because that's all you need. A single fatty wire built into the baseplate switches easily from stowed, to low (12°), to high (18°) climbing positions and back again while touring. Eliminating the second wire saves weight and fiddle time.

Precise Sizing: The single wire baseplate redesign opened up the possibility for a narrower heel and shorter baseplate construction for our size small bindings. More precise sizing options for smaller feet paved the way to developing our much-anticipated, first-ever women's binding versions – the Women's Arc and the Women's Surge!

T1 Heel Rest: Redesigned heel rest catches the climbing wire in the 12 and 18 degree positions and is specifically designed to hold the new T1 Heel Locker in place.

Snap Ramps & Side-Lock Touring Brackets: Just like the good 'ole days of our original Tesla System, T1 bindings slide sideways into the offset touring bracket and are locked into place with our snap ramp. No pins, no cables, no fiddle factor.

Puck Compatibility: Slide them on and snap the ramp down. Snap the ramp up and slide them off. The most functional way to attach your binding to your board in ride mode. Period. Oh, and check out our new Spark pucks ... we think you'll be pretty excited about these.

Ibex Crampons: Slide in from the side while touring and two sets of horns on the Ibex crampons catch the wire in both the 12 and 18 degree climbing positions, pushing the teeth fully in to the snow for max security on any pitch.

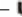

T1 Heel Locker: New design snaps in to better stay put in locked or free mode. Larger radius bends are stronger and the design allows for more variation in insert locations on the board.

♂ SIZING	US MEN'S	EUR MEN'S	MONDO MEN'S	♀ SIZING	US WMN'S	EUR WMN'S	MONDO WMN'S
SMALL	<8	<40	<25	SML/MED	5-8.5	35-39	22-25.5
MEDIUM	8-10.5	40-43	25-27.5	MED/LRG	9-11	40-43.5	26-28
LARGE	11+	43.5+	28+				

INTRODUCING TESLA T1 TECH



And don't forget these other great features of all Spark R&D Splitboard Bindings:

- Baseplates are CNC machined from billet aluminum for maximum strength
-  Low-profile plastics and buckles keep out of the way while skinning. Hardware manufactured with Burton's time-tested, bomber secret recipe of materials, and made to our specs.
-  3D ankle and toe straps are pre-curved for comfort fit using Burton fabrics – the industry leader in quality and durability.



RIP 'N' FLIP HIGHBACK FEATURES

- Tool free micro-adjustable from 0° to 22° for complete customization of your forward lean position.
- Flippin' FLAD toggles between your forward lean position and -13° touring position for easy transitions.
- Unique re-curve design slopes gently outward at the heel for maximum comfort in negative lean touring position.
- Made with proprietary custom blended materials for improved strength and durability, yet weighs in 30 percent lighter than our previous highback.
- Minimalist design uses padding only in the heel, just where you need it, for just the right amount of cushion and grip while touring and riding.
- Stiff where you need it toe-to-heel, yet torsionally flexible for improved mobility while riding. Stiffer for the Surge. Less stiff for the Arc.
- Larger grab hole for security when unstrapping and billy goatting.
- Spark Strappy Strap ready with lateral slots built in.
- Compatible with all Spark R&D bindings. Can be bought as an upgrade for previous binding models.
- Comes standard on the Arc and Surge.

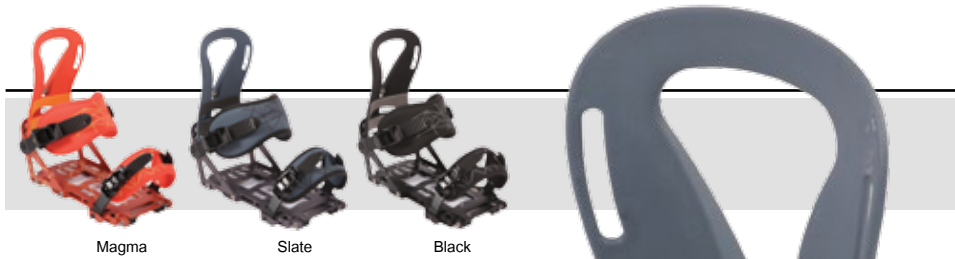


NEW RIP 'N' FLIP HIGHBACK

Our new Rip 'N' Rip Highback is flippin' sweet. Packed full of splitboard specific features, this sexy new piece is a Spark R&D original. Built from 3D scans of many popular boots used by splitboarders to get the shape and feel just right. It has everything you need and nothing you don't, from skin track to shredding.

Weight: Arc 6.12oz/pr (174g) | Surge 6.38oz/pr (181g)





Magma

Slate

Black

tesla 

-ARC-

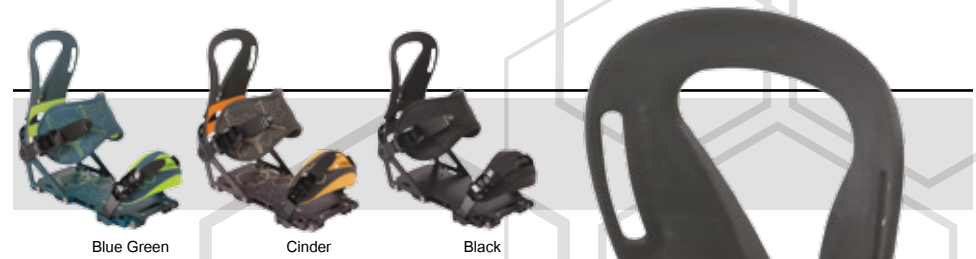
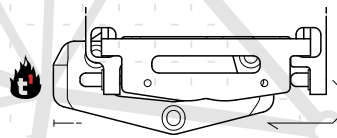


NEW ARC

The Arc is our lightweight, pow-chasing, touring machine, starring our new Tesla T1 System. *(This is the T1 version of our discontinued Magneto binding.)* Maximum cutouts in baseplate shave weight, yet maintain strength and performance, and allow puck adjustment with bindings in place. Features a softer version of our new Rip 'N' Flip Highback for easy flex and mobility, as well as more low profile ankle and toe straps. Long tours, epic overnights, trees, steeps – these bindings can do it all. Incredibly lightweight – only 675 grams per binding *(10% lighter than the Magneto)*.

Colors: Magma, Slate, Black

Weight: 1.49lb/ea (675g) – 2.98lb/pr (1350g) - Medium



Blue Green

Cinder

Black

tesla 

SURGE

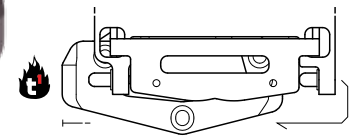


NEW SURGE

Unapologetically stiff and powerful, the Surge is built for big days on big lines. *(This is the T1 version of our discontinued AfterBurner binding.)* Features a solid baseplate design, stiffer version of our new Rip 'N' Flip Highback, wide supportive ankle straps and a toe cap strap to keep you locked into place. All of this equals more power with greater control in demanding terrain. This binding is preferred by our bigger, more aggressive riders. Maximum power, unparalleled performance, and designed for efficiency: the Surge will put a charge in your backcountry riding!

Colors: Blue Green, Cinder, Black

Weight: 1.65lb/ea (748g) – 3.3lb/pr (1496g) - Medium



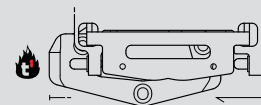
NEW**WOMEN'S****SPARK R&D WOMEN'S TESLA T1 BINDINGS****NEW**

WOMEN'S ARC

Introducing the Women's Arc – our first ever women's specific splitboard binding! Not just a pretty color, this binding has all the features of the standard Arc binding, only sized specifically for women's boots. All new Tesla T1 System design allows for shorter and narrower baseplates, accommodating down to a size 5 boot, yet still works seamlessly with Voile or our new Spark pucks. Shorter and lower heel loops move the feet forward while positioning the highbacks lower on the leg for better calf fit. A perfect fit for ladies who like a lightweight binding with softer features for comfort and max versatility.

Color: Cyan

Weight: 1.35lb/ea (615g) – 2.71lb/pr (1230g) - S/M

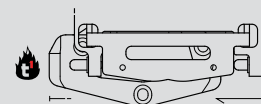
**NEW**

WOMEN'S SURGE

Meet the Women's Surge – our first ever women's specific big mountain splitboard binding! Features all the same stiff and powerful components of the Surge; strong enough for a man, but sized for a woman. All new Tesla T1 System design allows for shorter and narrower baseplates, accommodating down to a size 5 boot, yet still works seamlessly with Voile or our new Spark pucks. Shorter and lower heel loops move the feet forward while positioning the highbacks lower on the leg for better calf fit. This will be a favorite for the splitboardettes who are looking for a tough binding to keep up with them.

Color: Purple

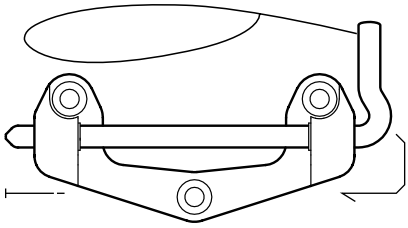
Weight: 1.53lb/ea (695g) – 3.06lb/pr (1390g) - S/M



Team Rider Claudia Avon
on the trail to fresh tracks.



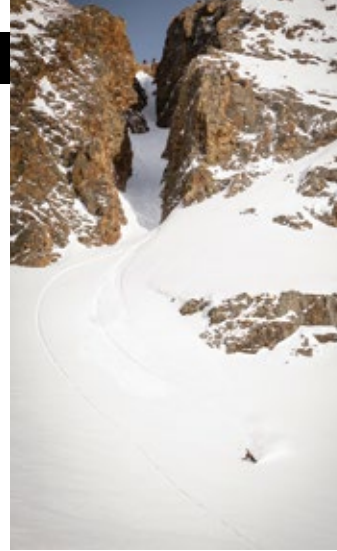
SPARK R&D PIN MOUNT BINDINGS



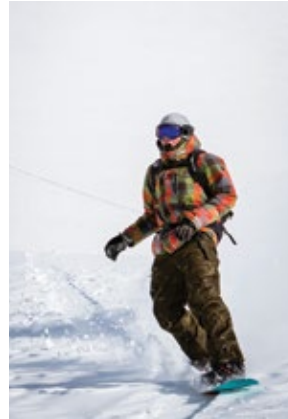
PIN MOUNT TOUR MODE

Used with our Blaze and Burner models, the pin is attached by a cable to the binding and is pushed all the way through the touring bracket, held into place by tucking the arm of the pin under the toe strap.

**Patented with additional patents pending.*



Rider: Todd Kirby / Photos: Strobot Studios



BLAZE

Back again for 15/16 is the time tested Blaze binding. Designed for the all-around adventurer looking for lightweight touring deep into the backcountry. Baseplates are cored out and paired with lighter straps for weight savings without compromised durability. Features a more flexible version of our classic highback for a surfy ride down. *Stainless steel pin mount binding.*

Color: Black

Weight: 1.6lb/ea (727g) – 3.21lb/pr (1454g) - Medium

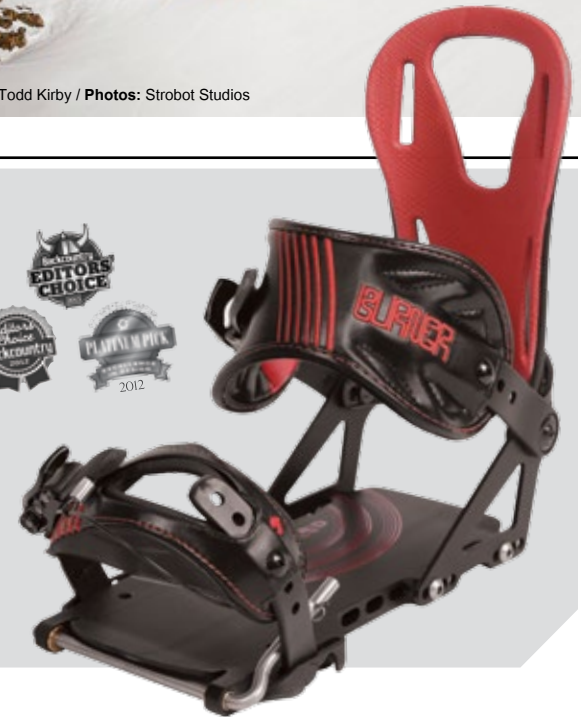
BURNER

The big mountain brother to the Blaze: stiffer components designed specifically for our bigger riders who prefer high-speed aggressive shredding. Features a solid baseplate, a stiff version of our classic highback, wide ankle strap and toe caps – your recipe for pointing it.

Stainless steel pin mount binding.

Color: Black

Weight: 1.75lb/ea (794g) – 3.5lb/pr (1588g) - Medium





NEW IBEX CRAMPON

With the evolution of our Tesla T1 System comes the all new Ibox Crampon, designed to work seamlessly with ALL Tesla and Tesla T1 System bindings. Backwards compatible to replace our previous Sabertooth Crampon. Lightweight aluminum construction for max strength and minimum weight. Installation and removal is effortless and on the fly, by sliding sideways into and out of Tesla Touring Bracket claw mounts. Teeth are fully engaged when used with or without the dual position climbing wire for maximum security on dicey terrain.

Color: Black, Magma, Blue Green | Wide in Black only.

Weight: 11.2oz/pr (316g) - Regular

MR. CHOMPS

Compatible with all Spark R&D pin mount bindings and the LT Pin System.

Lean forward to easily position crampons under the touring pin and remove the same way. Riser mounted on crampon keeps same depth of teeth in the snow when using heel lifts. Can use in free or fixed mode depending on the terrain and snow surface.

Color: Black

Weight: 13oz/pr (362g) - Regular



SIZING	INSIDE WIDTH	
REGULAR	Boards 26cm waist or less. (most boards)	13.8cm
WIDE	Boards 26cm - 28.5cm waist. (select boards)	14.8cm



NEW SPARK PUCKS

Finally, a breakthrough in puck design. Near infinite adjustability is now available for standard splitboard insert patterns! The unique, patent-pending design gives the Spark Pucks channel-like adjustability for regular splitboards.

- Oversize aluminum center disc overlaps binding channels for maximum strength and rigidity.
- Bindings slide on soft, nylon material for effortless installation.
- +/- quarter inch (6.5mm) of toe/heel adjustment allows for perfect centering. An industry first!
- +/- 30 degree angle adjustments; infinite stance width and setback adjustments.
- Works with all Tesla and Tesla T1, as well as Blaze & Burner bindings.

Color: Black

Weight: 5.6oz/pr (159g)

NEW

RIP 'N' FLIP HIGHBACK

Already have Spark bindings, but drooling over the new Rip 'N' Flip Highback? Upgrade to the future. Comes à la carte in the softer Arc style, and the stiffer Surge style, whichever you fancy. Compatible with Tesla & Tesla T1, as well as Blaze & Burner bindings.

Color: Black

Weight: 6.35oz/pr (180g)





DYNO DH

The Dyno DH is back again: Our first ever, hardboot specific splitboard binding awarded Backcountry Magazine's 2015 Gear Guide Select! For years we have offered Dynafit toes and adapters for hardboot touring on the way up, now the Dyno DH completes the package for the ride down.

- Extremely lightweight – only 381 grams per binding
- **Bomber** Indestructible Bomber Industry stainless steel bails and anodized aluminum toe clips
- Tesla System Snap Ramps for speedy, pinless transitions

Color: Black
Weight: 1.68lbs/pr (762g) - *Medium*



- Spark & Voile puck compatible (*canted pucks recommended*)
- Note: Binding is for ride mode only.
- Dynafit toe pieces, Voile climbing wires, and optional Dynafit Adapters are recommended for touring



VOILE CANTED PUCKS

Keep your knees happy with canted pucks! Compatible with all Spark R&D Bindings; recommended for our Dyno DH Hardboot binding.

Color: Black
Weight: 6.72oz/pr (192g)

D REX CRAMPONS

Designed specifically for Dyna-Splitters, these crampons fit directly onto Dynafit Speed Radical toe pieces for the utmost confidence in dicey conditions. Install and remove on the fly by sliding sideways into and out of the Dynafit crampon claws. Riser mounted on crampon keeps same depth of teeth in the snow when using heel lifts.

Color: Black
Weight: 13.2oz/pr (373g) - *Regular*



Riser blocks stack for climbing

SPEED RADICAL TOE PIECES

Combining maximum functionality with minimum weight, the trademark Dynafit tech toe design securely locks the boot in place for confident touring. Light and fast, the Speed Radical toe pieces are your ticket to the top! Combine with our Dynafit Adapter Plates for drill-free attachment.

Color: As shown | Weight: 11.04oz/pr (313g)



DYNAFIT ADAPTERS

Our Dynafit adapters allow drill free use of Dynafit speed radical toe pieces for the part-time or full-time hardboot rider.

Color: Black
Weight: 6.72oz/pr (192g)



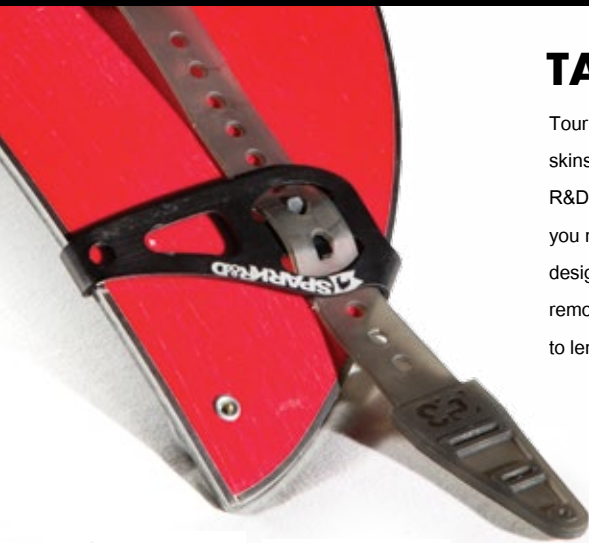
DUAL HEIGHT WIRES

Dual height climbing wires for use with the Dyno DH. Stand heights from 55mm to 75mm.

Color: Black | Weight: 5.9oz/pr (167g)

Rider: Joe Bosler / Photo: Jordan Ingmire





Red



Black

TAILCLIPS

Tour with confidence, even backwards, knowing your skins are securely in place. The revolutionary Spark R&D Tailclips are a retro-fit addition to any skins – all you need is a hammer and scissors. Asymmetric clips designed specifically for splitboards are easy to remove and secure keeping skins tensioned parallel to length. US and International Patents.

- 10cm of tool-free length adjustment to fit your whole quiver
- Kit includes stretchers, clips, rivets, and webbing extenders for those of you with crazy long boards (or crazy short skins!)

Colors: Red, Black
Weight: 1.92oz/pr (54g)

STRAPPY STRAP

Less fatigue equals more fun in the backcountry. The Strappy Strap is designed to slot through all Spark R&D highbacks and wrap around the top of your boot to provide additional support and edging power while touring.

Color: Black
Weight: 3.9oz/pr (110g)



VERTS

When skinning just isn't an option, post-holing shouldn't be either. Spark R&D has collaborated with Verts to offer a split friendly climbing alternative – the first ever splitboard specific snowshoe.

- Slide your Spark binding directly onto the adapter, no need for a separate snowshoe binding
- Designed specifically for ascending steep slopes
- Compact 18.75" x 8.5" (48cm x 22cm) footprint
- Toe forward design for fatigue-free front pointing
- High performance non-stick, super tough nylon
- Lightweight 2.46lb/pr (1117g)



Team Rider: Marcin Jaskolka



together with **G3**

SPLITBOARD SKINS

Our popular splitboard skins are back again! High traction skin material manufactured by G3 is the perfect combination of stick, slide, and grip. Equipped with our patented tailclips and killer GNARgyle print, these babies get you to the top with less effort and more style.

Color: GNARgyle
Weight: 1.63lb/pr (738g) - Medium

SML: 147-161cm / MED: 159-175cm / LRG: 172-186cm

SPARK R&D HATS, TEES & HOODIES!



NEW SPARK BASE LAYER

When it's time to get your tour on, this 100% polyester long sleeve tee delivers wicking performance without the stink. Field tested and approved by Team Spark.

Colors: Assorted



SPARK HAT

The Spark Logo Hat — both stylish and functional. The wide brim keeps the sun at bay while the mesh back keeps you cool on spring tours.

Color: Black / White

NEW MOONRISE T-SHIRT & HOODY

Wear your Spark colors proudly in this sweet new Moonrise Logo T-Shirt & Hoody. Designed by contest winner Jesse Hambley. Super soft, 100% cotton for all day comfort. Slim fit. Made in the USA.

Colors: Assorted





-ARC- SURGE



Surge Kit

Arc Kit

NEW T1 BASEPLATE KITS

For those splitters who already have a set of Blaze, Burner, Magneto and/or AfterBurner bindings, but are now ready for the Tesla T1 System. Switch the heel loop, highbacks, ankle and toe straps onto Tesla T1 baseplates and you are ready to rock. Comes with baseplates, Tesla brackets, heel rests, and hardware. 2011/12 Blaze requires the addition of a Heel Loop Kit (*sold separately*).

MEN'S — Color: Black // Arc: 1.41lb/pr (643g) / Surge: 1.60lb/pr (729g)

WOMEN'S — Color: Black // Arc: 1.38lb/pr (625g) / Surge: 1.56lb/pr (707g)



T1 Heel Rests

Tesla Heel Rests



2ND BOARD KIT

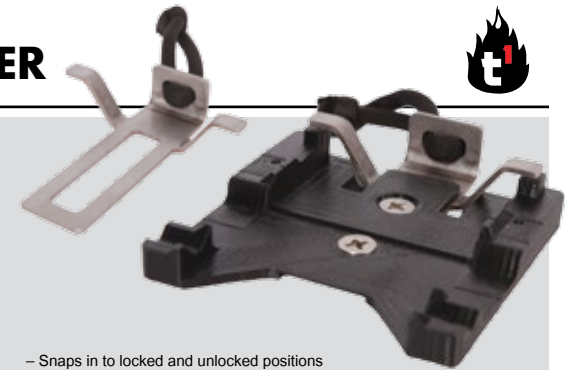
Set up multiple splitboards to be tour-ready with Tesla System (*Magneto & AfterBurner*) or Tesla T1 System bindings (*Arc & Surge*). Comes with Tesla touring brackets, both Tesla & T1 Heel Rests, and screws. Pair it up with a Spark or Voile Puck Only Kit and you're ready to ride.

Color: Black | Weight: 7.76oz/pr (220g)

NEW T1 HEEL LOCKER

Designed exclusively for our new Tesla T1 System bindings, the T1 Heel Lockers fit seamlessly under the T1 heel rests and deploy easily with the tip of ski pole. Riders can lock down the heel in tour mode to better adapt to diversified terrain types where quick descents, side-stepping, traversing, and skate-splitting become more effective means of backcountry travel.

Color: Stainless | Weight: 2.47oz/pr (70g)



- Snaps in to locked and unlocked positions
- Forward releasable for added safety
- Made of durable stainless spring steel
- Compatible with Tesla T1 System bindings (*Arc & Surge, including Women's versions*)

TESLA HEEL LOCKER

One of our best selling accessories is back and better than ever for the 15/16 season. Tesla Heel Lockers attach to the Tesla heel rest and are easily operated with the tip of a ski pole. Riders can lock down the heel in tour mode to better adapt to diversified terrain types where quick descents, side-stepping, traversing, and skate-splitting become more effective means of backcountry travel.

Color: Stainless | Weight: 2oz/pr (57g)



- Updated, more stompable design featuring stronger, larger radius bends
- Improved sizing for precise functionality and baseplate fit
- Forward releasable for added safety
- Made of durable stainless spring steel
- Increased friction to stay put in locked or unlocked position
- Compatible with Tesla System bindings (*Magneto & AfterBurner*)

Team Rider: Mark Carter / **Photo:** Canyon Florey



LT PIN SYSTEM

Our "LT" or "Lightweight Touring" pin system is an aluminum pin and bracket combination used to upgrade our Blaze and Burner pin mount bindings that come standard with stainless steel pins. Designed for splitboarders looking for better performance and durability, the LT Pin system is stiffer, lighter, and more slop free for near frictionless touring.

Color: Black

Weight: 3.84oz/pr (109g)

STAINLESS STEEL PINS – Spare pin kit for use with Voile touring brackets. *Available for Blaze/Burner models.*



HEEL LOOP KITS

For use with our Tesla & T1 Baseplate Kits, these loops can be used as spares or to upgrade your 11/12 Blaze & Burners into Tesla / T1 Bindings.

Color: Black | Weight: 6.56oz/pr (184g)

WOMEN'S HEEL LOOP KITS

Originally designed as an add on to provide better fit for smaller riders, these loops now come stock on our new Women's binding lineup. Also compatible with 12/13 and beyond Blaze/Burner bindings and all Tesla & T1 System bindings as a stand alone retro-fit.

Colors: Black | Weight: 5.44oz/pr (155g)



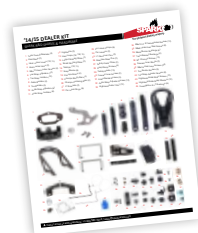
BACKCOUNTRY KIT – Everything you need to keep a pow day from being cut short. *Includes spare plastics, screws, and buckles.*



VOILE UNIVERSAL SPLIT KIT – Use with our pin mount Blaze and Burner Bindings to complete your splitboard.

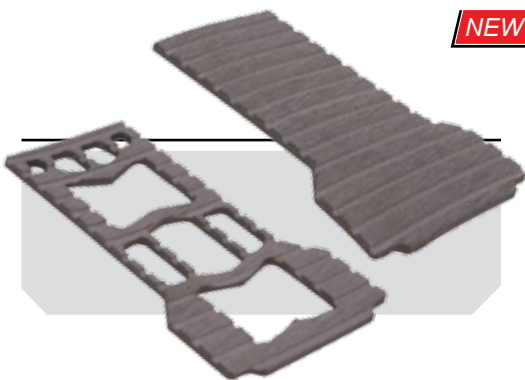


SPARK TOOL – Your best friend in the backcountry, this tool has everything you need to adjust your split-board setup.



DEALER SPARE PARTS KIT
A one-stop-shop to service your Spark R&D Binding & Accessory fleet.





NEW BASEPLATE PADDING KIT

Reduce foot fatigue and chilly feet on long tours with our new Baseplate Padding Kits. Made of durable, grippy EVA foam. 3M peel and stick adhesive keep pads firmly in place. Ideal for long days in the skin track or days riding firm conditions. Four versions – cutout (*for Magneto/Arc & Women's Arc*) and solid (*for AfterBurner/Surge & Women's Surge*).

Color: Cool Gray | Average Weight: 1.16oz/pr (33g)

Black Diamond



CARBON WHIPPET

For steep, icy bootpacks and added self-arrest security on mega-steep, no-fall terrain. This is the most compact whippet you can find on the planet with 3-section packability; perfect for splitboarding. Stainless steel pick with canard wing built into a dual-density touring grip. Dual FlickLock Pro adjustability and security, rugged carbon fiber lowers. Compacts down to 70cm. Sold individually.

Color: BD Orange
Usable Length: 39-55in (100-140cm)
Collapsed Length: 27.5in (70cm)
Weight: 1.05lb/ea (475g)

Spark R&D — Teaming with Black Diamond to offer the best touring poles for splitboarders.

**US Distribution Only.*

NEW EXPEDITION 3

Collapsible three-section aluminum pole design with dual FlickLocks for maximum adjustability. Hook pointed handle can be used to flip wires on the fly and extended foam grip lets you choke up on the pole when booting up a couloir. Comes with both powder and trekking baskets to match the season.

Color: Blaze Yellow
Usable Length: Short: 23-49in (58-125cm) | Long: 24-55in (62-140cm)
Collapsed Length: Short: 22.8in (58cm) | Long: 24.4in (62cm)
Weight: 1.13lb/pr (520g)

COMPACTOR

Sturdy, adjustable-length, aluminum Touring Series climbing poles ideal for splitboard travel. Z-Pole functionality deploys in seconds, and folds down to an ultra-compact and packable size for the ride down. Offers 20cm of adjustment for all conditions.

Color: Kelly Green
Usable Length: Short: 41-59in (105-125cm) | Long: 45-53in (115-135cm)
Collapsed Length: Short: 15in (38cm) | Long: 16in (40cm)
Weight: 1.38lb/pr (625g) - Short

NEW T1 HEEL RESTS

Easily upgrade your current Tesla Second Board Kit to a T1 Second Board Kit with these à la carte T1 Heel Rests. All Tesla & T1 System touring brackets are cross-compatible

Colors: Black | Weight: 2.75oz/pr (78g)



Riders: Mike Burmeister & Neil Waggoner
Photo: Shasta Hood



NEW RISER KITS

Especially helpful for riders with large boot sizes, Riser Kits increase the binding rotation angle while touring, preventing toe strike and increasing stride length. Comes in two versions – Tesla and T1 Risers.

Colors: Black
Tesla Weight: 3.75oz/pr (107g)
Tesla T1 Weight: 5.25oz/pr (148g)

T1 Risers



Tesla Risers


ONE BINDING SYSTEM

Pucks for your solid board. The One Binding System brings Spark R&D into the quiver binding category. Perfect for trips where you are traveling with multiple boards, or days when you might see a mix of resort riding on your solid board, and side-country touring on your split. All you need is one pair of bindings – your Sparks.

Color: As Shown
Weight: 15.5oz/pr (438g)



ONE
BINDING
SYSTEMS

A high-angle, close-up photograph of two people in winter sports attire. The person on the left wears a grey jacket and a helmet with orange-tinted goggles. The person on the right wears a blue knit beanie, green goggles, and a red and white striped scarf. They are both looking down at a map spread out on a green snow machine. The person on the right is holding a small electronic device in their gloved hand. The background is a snowy, outdoor environment.

sales@sparkrandd.com
+1 866.725.2085

SPARK R&D
P.O. Box 3284
Bozeman, MT 59772, USA

 sparkrandd.com

